

# 8FB25

# 8FBH25

## MAIN VEHICLE SPECIFICATIONS

(September 2016)

1	Manufacturer			TOYOTA	TOYOTA
2	Model			<b>8FB25</b>	<b>8FBH25</b>
3	Load Capacity		kg	2500	2500
4	Load Center		mm	500	500
5	Power Type			Battery	Battery
6	Operator Position			Rider Seated	Rider Seated
7	Tire Type		Front/Rear	Pneumatic	Pneumatic
8	Wheels (x = driven)		Front/Rear	2x/2	2x/2
9	Maximum Fork Height (MFH)		mm	3000	3000
10	Free Lift		mm	130	130
13	Fork Size		L x W x T	1070/120/40	1070/120/40
	Lateral Fork Adjustment		MAX./MIN.	1020/240	1020/240
14	Tilt Range		FWD/BWD	7/11	7/11
15	Length to Fork Face		mm	2290	2290
16	Overall Width		mm	1160	1160
17	Mast Lowered Height		mm	1975	1975
18	Mast Extended Height		mm	4220	4220
19	Overhead Guard Height		mm	2025	2105
21	Turning Radius (Outside)		mm	2000	2000
22	Load Distance (Centerline of front axle to front face of forks)		mm	435	435
	Rear Overhang		mm	355	355
23	Basic Right Angle Stacking Aisle Width (Add load length and clearance)		mm	2430	2430
	Intersecting Aisle Width		mm	1875	1875
24	Travel, Max. (FWD/RVS)	Full Load	km/h	14.0/14.0	14.0/14.0
		No Load	km/h	16.0/16.0	16.0/16.0
25	Speeds *	Lifting	Full Load	mm/sec	340
		No Load	mm/sec	600	600
26	Lowering	Full Load	mm/sec	500	500
		No Load	mm/sec	500	500
27	Drawbar Pull *	Full Load/ No Load	3-Minute Ratings	N (kg)	11090/10560 (1130/1070)
			5-Minute Ratings	N (kg)	11090/10560 (1130/1070)
			60-Minute Ratings	N (kg)	4510/4810 (460/490)
29	Gradeability *	Full Load/ No Load	3-Minute Ratings	% (tan $\theta$ )	18/20
			5-Minute Ratings	% (tan $\theta$ )	18/20
			30-Minute Ratings	% (tan $\theta$ )	12/20
32	Total Weight		Without Battery	kg	2960
33	Weight Distribution (With STD Battery)	Full Load	Front	kg	5630
			Rear	kg	710
34		No Load	Front	kg	1570
			Rear	kg	2270
35	Number		Front/Rear	2/2	2/2
36	Tires	Front		21X8-9-14PR (I)	21X8-9-14PR (I)
37		Size	Front		18X7-8-14PR (I)
38	Wheelbase		mm	1500	1500
39	Tread		Front	mm	970
			Rear	mm	940
	Backrest Height		mm	1220	1220
	Overhead Guard Clearance		mm	1035	1035
	Counterweight Height		mm	1125	1135
	Drawbar Height			280	280
	Step Height/Floor Height		mm	435/620	435/700
40	Underclearance	Mast (Full Load)		mm	65
41		Center of Wheelbase (Full Load)		mm	85
		Drive Axle (Full Load)		mm	65
		Steer Axle (No Load)		mm	120
		Counterweight (No Load)		mm	115
		Minimum Under Clearance (Full Load)		mm	65(Mast)
	Grade Clearance		Frame	% (tan $\theta$ )	25
			Counterweight	% (tan $\theta$ )	49
42	Brake		Service (Foot)	Hydraulic	Hydraulic
43			Parking	Hand	Hand
45	Battery	Voltage/Capacity (5-hour rating)	STD	V/AH	48/565
			High	V/AH	48/600
46	Weight (STD Capacity Type)		kg	880	1160
47	Drive		kW	10.7	10.7
48	Electric Motors	Load Handling		kW	12.2
		Energy Consumption According to VDI Cycle **		kWh/h	4.5
54	Control Type		Drive	Transistor inverter	Transistor inverter
			Load Handling	Transistor inverter	Transistor inverter
57	Operating Pressure		For Attachments	Mpa (psi)	14.7(2100)

Sound level at the driver's ear according to EN12053 Uncertainty 4dB(A)	dB(A)	67	67
Vibration in accordance with in EN13059	m/s <sup>2</sup>	1.5	1.5

NOTE: \* Computed values.

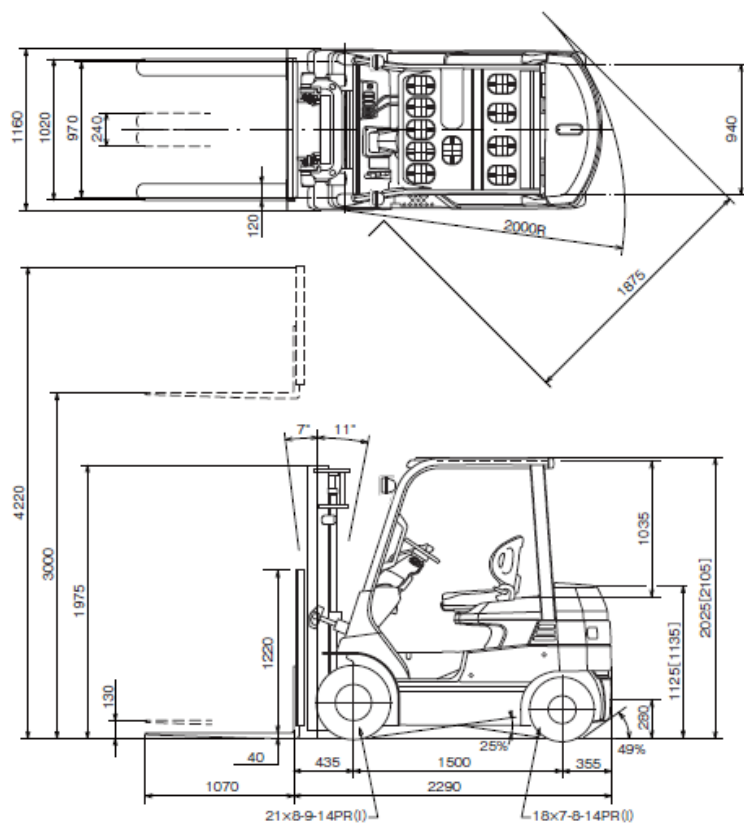
\*\* 60 VDI circles/h with Tested Load of 2500 kg.

## DIMENSIONAL DRAWINGS

(September 2016)

Unit: mm

### 8FB25/8FBH25



### UNDERCLEARANCE

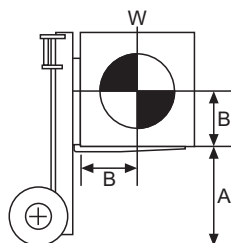
Mast (Full Load)-----	65
Center of Wheelbase (Full Load)-----	85
Drive Axle (Full Load)-----	65
Steer Axle (No Load)-----	120
Counterweight (No Load)-----	115
Minimum Underclearance (Full Load)---	65(Mast)

NOTE: [ ] for 8FBH25

## RATED CAPACITIES

(September 2016)

### 8FB25/8FBH25



**A:** Max. Fork Height  
**B:** Load Center  
**W:** Capacity

### V, FV Mast

Unit: kg (W)

A (mm)	3000	3300	3500	3700	4000	4500	5000
B (mm)	500	2500	2500	2500	2500	2500	2300 <2450> 1800 <2350>
	600	2250	2250	2250	2250	2250	2070 <2210> 1620 <2120>
	700	2050	2050	2050	2050	2050	1890 <2010> 1480 <1930>
	800	1890	1890	1890	1890	1890	1730 <1850> 1360 <1770>
	900	1740	1740	1740	1740	1740	1600 <1710> 1250 <1640>
	1000	1620	1620	1620	1620	1620	1490 <1590> 1170 <1520>
	1100	1520	1520	1520	1520	1520	1390 <1490> 1090 <1420>
	1200	1420	1420	1420	1420	1420	1310 <1390> 1020 <1340>
	1300	1340	1340	1340	1340	1340	1230 <1310> 960 <1260>

### FSV Mast

Unit: kg (W)

A (mm)	3700	4000	4300	4500	4700	5000	5500	6000	
B (mm)	500	2400	2400	2300 <2400>	2050 <2300>	2050 <2300>	1650 <2200>	1250 <2000>	1000 <1550>
	600	2170	2170	2080 <2170>	1850 <2080>	1850 <2080>	1490 <1990>	1130 <1810>	900 <1400>
	700	1980	1980	1900 <1980>	1690 <1900>	1690 <1900>	1360 <1820>	1030 <1650>	820 <1280>
	800	1820	1820	1750 <1820>	1560 <1750>	1560 <1750>	1250 <1670>	950 <1520>	760 <1180>
	900	1690	1690	1620 <1690>	1440 <1620>	1440 <1620>	1160 <1550>	880 <1410>	700 <1090>
	1000	1570	1570	1510 <1570>	1340 <1510>	1340 <1510>	1080 <1440>	820 <1310>	650 <1010>
	1100	1470	1470	1410 <1470>	1260 <1410>	1260 <1410>	1010 <1350>	760 <1230>	610 <950>
	1200	1380	1380	1320 <1380>	1180 <1320>	1180 <1320>	950 <1270>	720 <1150>	570 <890>
	1300	1300	1300	1250 <1300>	1110 <1250>	1110 <1250>	890 <1190>	680 <1090>	540 <840>

NOTE: &lt;&gt; for dual tire models.

## SPECIAL TREAD

(September 2016)

Model		8FB25/8FBH25		
Front Tire	Single/Dual	Single	Single	Dual
Front Tire Size		21x8-9-14PR (I)	23x9-10-16PR (I)	6.00-9-10PR (I)
Overall Width	mm	1160	1220	1480
Tread, Front	mm	970	990	1130

## SPECIAL MAST

(March 2018)

Wide Visible Mast (V), Wide Visible Full-Free Lift Two-Stage Mast (FV), Wide Visible Full-Free Lift Three-Stage Mast (FSV)

Model		8FB25/8FBH25													
Type of Mast		V				FV				FSV					
PERFORMANCE															
Power Mode		H	P	S	E	H	P	S	E	H	P	S	E		
Speeds	Lifting	Full Load	mm/sec	340	260	260	220	320	240	240	220	320	240	240	220
		No Load	mm/sec	600	500	500	465	570	480	480	440	570	480	480	440
	Lowering	Full Load	mm/sec	500	500	500	500	480	480	480	480	480	480	480	480
		No Load	mm/sec	500	500	500	500	420	420	420	420	450	450	450	450

### DIMENSIONS

Load Distance (Centerline of front axle to front face of forks)	mm	435	430	460
--	----	-----	-----	-----

NOTE: H High power mode / P Power mode / S Standard mode / E Eco mode

## MAST SPECIFICATIONS & RATED CAPACITIES

(September 2016)

Wide Visible Mast (V), Wide Visible Full-Free Lift Two-Stage Mast (FV), Wide Visible Full-Free Lift Three-Stage Mast (FSV)

### 8FB25/8FBH25

Mast Type	Maximum Fork Height	Overall Height				Free Lift		Single tire			Dual tire	
		* Lowered	Extended		Without Load Backrest	With Standard Load Backrest	Tilt Range		Load Capacity at 500 mm LC	Tilt Range		Load Capacity at 500 mm LC
			Without Load Backrest	With Standard Load Backrest			FWD	BWD		FWD	BWD	
mm	mm	mm	mm	mm	mm	deg	deg	kg	deg	deg	kg	
V	2500	1725	3165	3720	130	130	7	11	2500	7	11	2500
	2700	1825	3365	3920	130	130	7	11	2500	7	11	2500
	3000	1975	3665	4220	130	130	7	11	2500	7	11	2500
	3300	2125	3965	4520	130	130	7	11	2500	7	11	2500
	3500	2225	4165	4720	130	130	7	11	2500	7	11	2500
	3700	2385	4365	4920	130	130	7	11	2500	7	11	2500
	4000	2575	4665	5220	130	130	7	5	2500	7	11	2500
	4500	2825	5165	5720	130	130	7	5	2300	7	5	2450
FV	5000	3075	5665	6220	130	130	7	5	1800	7	5	2350
	3000	1975	3600	4220	1375*	755*	7	11	2500	7	11	2500
	3300	2125	3900	4520	1525*	905*	7	11	2500	7	11	2500
	3500	2225	4100	4720	1625*	1005*	7	11	2500	7	11	2500
FSV	3700	2385	4300	4920	1785*	1165*	7	11	2500	7	11	2500
	4000	2575	4600	5220	1975*	1355*	7	5	2500	7	11	2500
	3700	1775	4340	4920	1135*	555*	7	5	2400	7	5	2400
	4000	1875	4640	5220	1235*	655*	7	5	2400	7	5	2400
	4300	1975	4940	5520	1335*	755*	7	5	2300	7	5	2400
	4500	2045	5140	5720	1405*	825*	7	5	2050	7	5	2300
	4700	2125	5340	5920	1485*	905*	7	5	2050	7	5	2300
	5000	2225	5640	6220	1585*	1005*	7	5	1650	7	5	2200
5500	2385	6140	6720	1745*	1165*	7	5	1250	7	5	2000	
6000	2575	6640	7220	1935*	1355*	7	5	1000	7	5	1550	

NOTE: Height of standard load backrest is 1220 mm.

\* with optional tire size ; 23×9-10-16PR (I), plus 20 mm.